

Floodplain Ordinance Amendment

Motion by: SAAL				
Second by: PIKE				
Dist.	Supervisor	Y	N	Abs
13	Alber			
18	Bailey			
3	Bloomer			
11	Breitenmoser			
1	Caylor			
19	Fox			
10	Giese			
12	Gilk			
15	Lee			
16	Loka			
14	Lussow			
17	Nelson			
4	Hetfeld			
21	Pike			
8	Plant			
22	Rankin			
7	Rusch			
5	Saal			
20	Vander Sanden			
2	Weaver			
6	Woller			
9	Zeitz			
Totals				
<u>Carried</u>				
Defeated				
Amended				
<u>Voice vote</u>				
Roll call				

AN ORDINANCE TO AMEND THE APPENDIX PER SECTION 20.1.5 (GENERAL PROVISIONS – OFFICIAL MAPS BASED ON OTHER STUDIES) OF THE LINCOLN COUNTY FLOODPLAIN ZONING ORDINANCE

The County Board of Supervisors of Lincoln County, Wisconsin, does hereby ordain:

Sec. 20.1.5 (Appendix) is amended as follows:

The Appendix of the Lincoln County Floodplain Zoning Ordinance is amended to include the Doering Dam Failure Analysis Study, dated November, 2012, prepared by Ayres Associates. (Approved by the Department of Natural Resources July 2, 2013).

This ordinance shall take effect immediately upon passage and publication.

Dated this 17th day of September, 2013

Introduced by: Lincoln County Planning and Zoning Committee

Date Passed (by Committee): September 12, 2013

Committee Vote: 4-0


Fiscal Impact: None

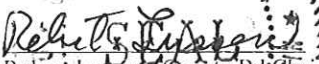
Drafted by Diane Hanson

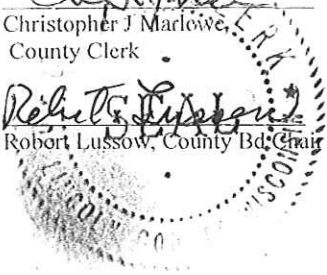
STATE OF WISCONSIN)
) SS:
 COUNTY OF LINCOLN)

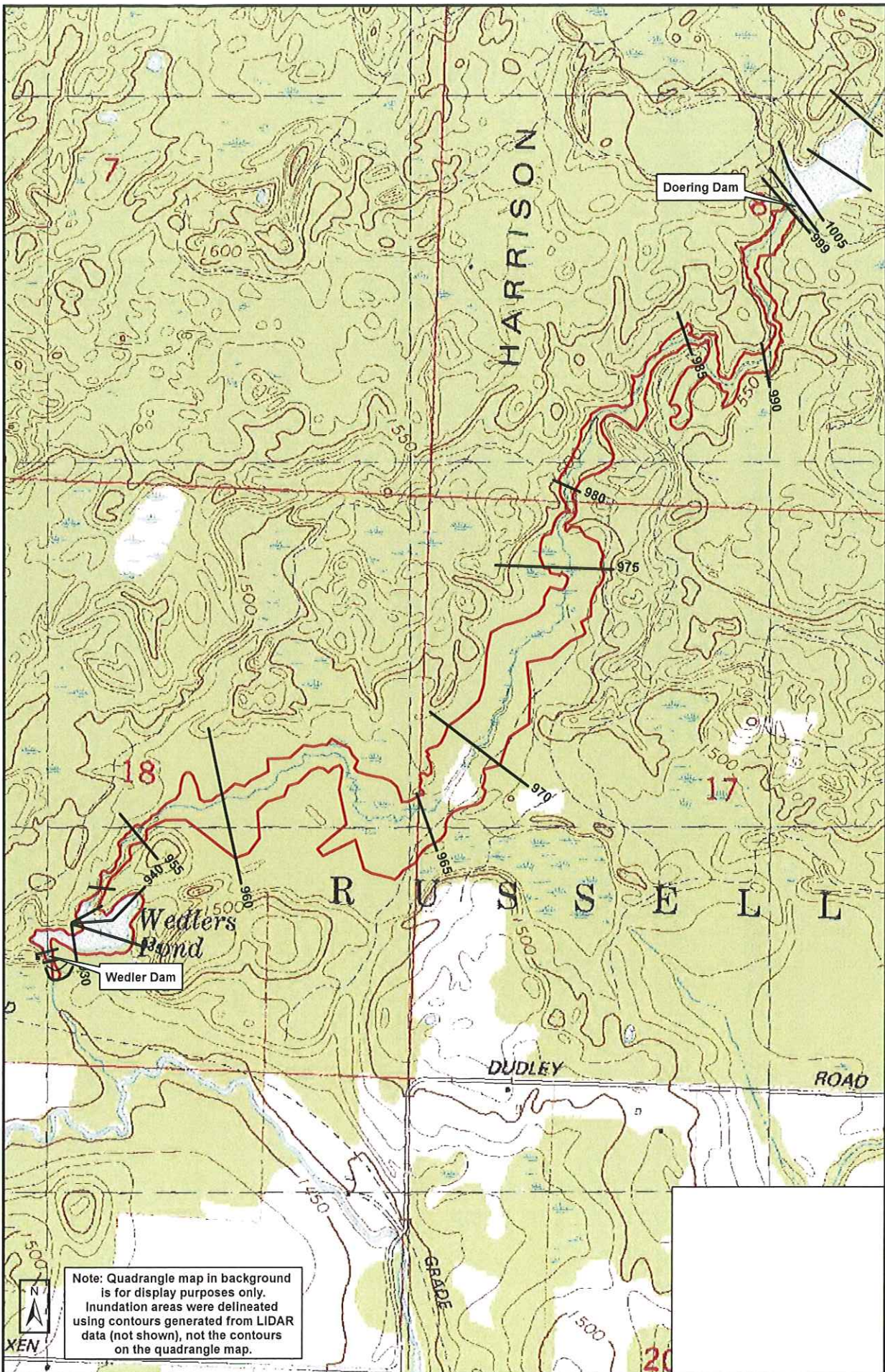
I hereby certify that this resolution/ordinance is a true and correct copy of a resolution/ordinance adopted by Lincoln County Board of Supervisors on:

09-17-2013


 Christopher J. Marlowe,
 County Clerk


 Robert Lussow, County Bd. Chair





Note: Quadrangle map in background is for display purposes only. Inundation areas were delineated using contours generated from LIDAR data (not shown), not the contours on the quadrangle map.



0 230 460 920 1,380 1,840 Feet
1 inch = 800 feet

Legend
 — CrossSections
 ■ HydraulicShadow

AYRES ASSOCIATES

Doering Dam Hydraulic Shadow Map
 November 2012